

## Copyright Notice

Copyright 2003 PHOTEC Corp.

All Rights Reserved.

## Trademarks

**wiew** is the trademark of PHOTEC Corp.

All other products names mentioned in this document are for identification purposes only and remain the sole property of their respective owners.

# Chapter 1 Introduction

Welcome and thank you for choosing Digital Surveillance System of WIEW.

Digital Surveillance System is the perfect security solution for home, office, or other place. You can monitor live camera video indoor, and also view the camera remotely; with the Motion Detection and I/O Alarm, intruder or any suspicious event will be recorded in digital video.

## Features:

- Enhanced MPEG-4 Compression Technologies;
- Supports up to 32 Channel Cameras per PC;
- Video & E-Map Display Model;
- Camera Mask:  
The Camera can be hid to the User who no view right and the recording video can't be playback too
- Smart Recording Video Search Playback;
- Advanced Motion Detection;
- Networking  
Support Multi-Levels Control;  
Remote view and control PTZ through LAN, Internet;  
Remote talk;
- Audio Recording;
- Watermark;
- Watchdog;

## Chapter 2 System Requirements

- ✧ Intel Pentium IV CPU or above, AMD Athlon CPU or above, or compatible CPU which supports MMX technologies.
- ✧ 256M system RAM OR above.
- ✧ Display Card: Geforce or ATI chip is recommended.
- ✧ OS: Microsoft Windows 2000 or Windows XP

## Chapter 3 Capture Card & Driver Installation

- Step 1: Turn off your computer power before installing video capture cards.
- Step 2: Install video capture cards in open PCI slots.
- Step 3: Turn computer on and Insert the software CD in the CD-ROM drive.
- Step 4: Windows will recognize the new hardware as shown.
- Step 5: Windows will now prompt you to let it search for the device drivers. This is the preferred method. Please click "Next".
- Step 6: Windows XP will find the correct driver on your CD-ROM. (With other versions of Windows you may have to direct it to the folder that corresponds with your Operating System). Select the first driver and click "Next".
- Step 7: Windows will then warn you that our driver has not passed Windows Logo Testing. Click "Continue Anyway".
- Step 8: Click "Finish".
- Step 9: If there is more than one card installed, repeat Step 5 to Step 8 until all drivers have been installed.

To make sure the Hardware Installation was completed properly, please check your Device Manager. You should find the correct number of Device Drivers listed under Sound, Video and Game Controllers before proceeding with Software Installation.

TIP: If Windows does not recognize one or more of your video capture cards, please do the following:

1. Clean the contacts of the video capture board with a clean pencil eraser to remove any residue.
2. If you are still having trouble, try another PCI slot.

## **Chapter 4 Server Software Installation**

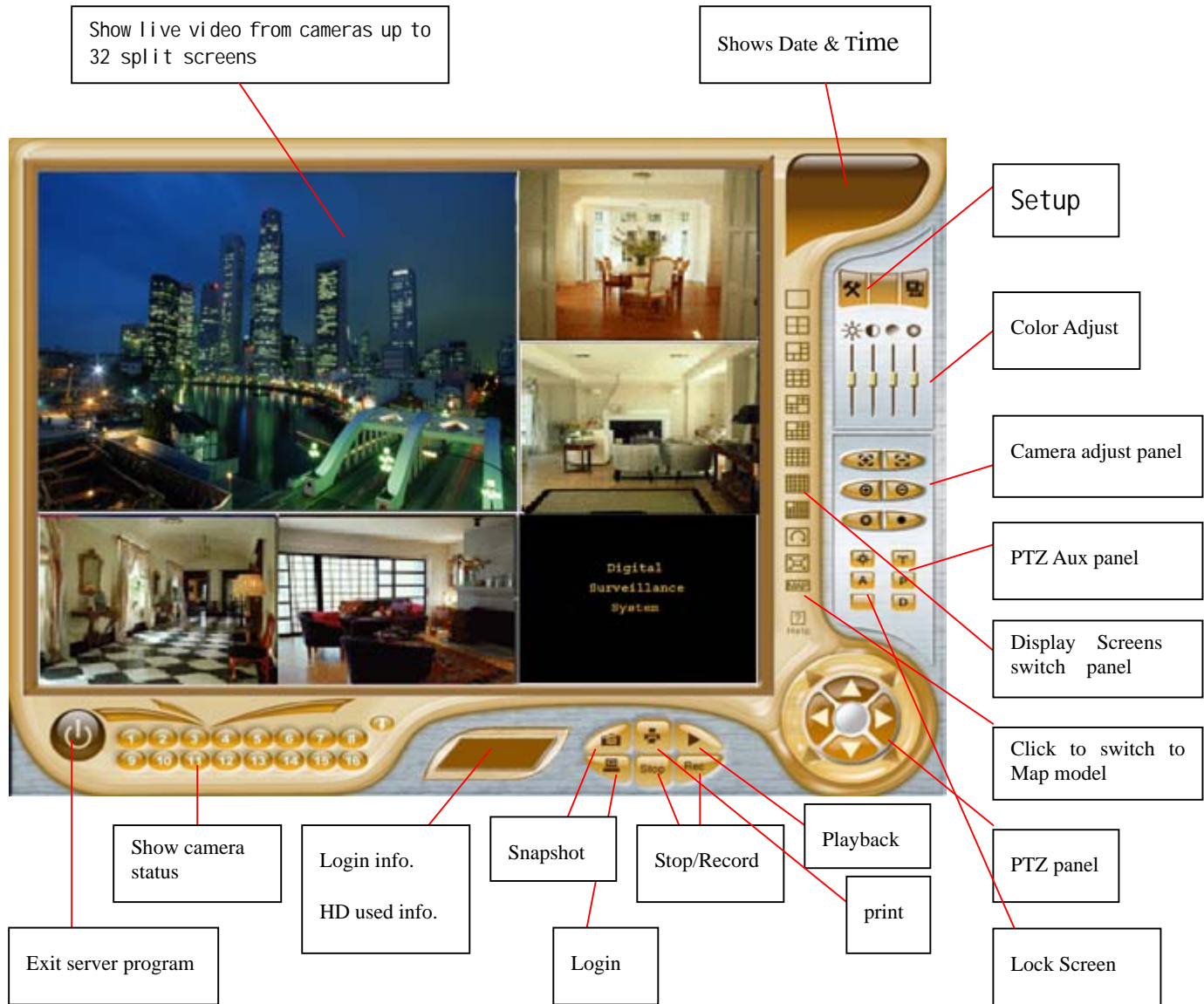
Insert the software CD in the CD-ROM drive.

Double-click on the folder of [Server].

Double-click on the s\_install icon to begin installation.

After rebooting your computer, you will find a shortcut for the SVDVR program in your "START" menu, listed under "All Programs". You may now run the program as desired.

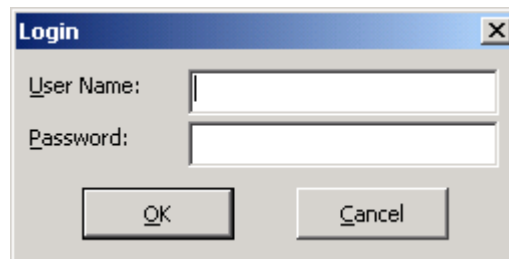
# Chapter 5 Server Software Guide



Launch SVDVR program, will show this image for seconds:



Then display this dialog box:



When login, please input User Name & Password

The default User Name : dvr Password : dvr

(Note : The DVR has an Administrator User Name : admin (keeps all rights) ,  
default Password : 1234

It is recommended to change default Password to prevent all user's rights!

If User Name & Password input correct, Click "OK" to login SVDVR.

#### ◆ Split Screens:

Show live video from cameras & caption ;

When drag split screen, the position of split screen can be exchanged ;

Show E-Map ;

#### ◆ Display Screen Switch Panel :

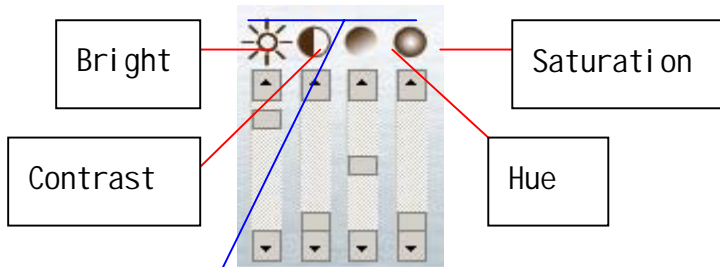
There are 1, 4, 6, 9, 10, 13, 16, 25, 33 split screens mode ;

Auto Flip;

Full Screen ;

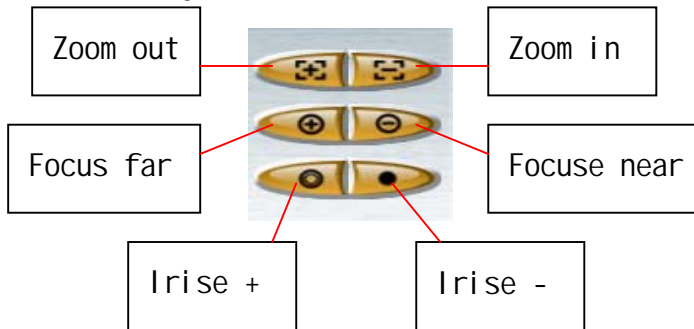
◆ **Color Adjust :**

Adjustable Bright, Contrast, Hue, Saturation by Individual Camera



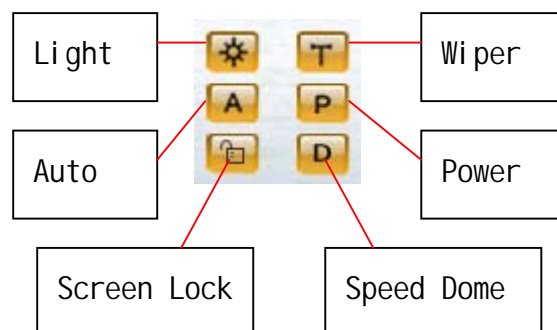
Click these icon will restore default setting;

◆ **Camera Adjust Panel :**



Click the button will allow you to control it's function

◆ **PTZ Aux Control Panel :**



Click the button will allow you to control it's function

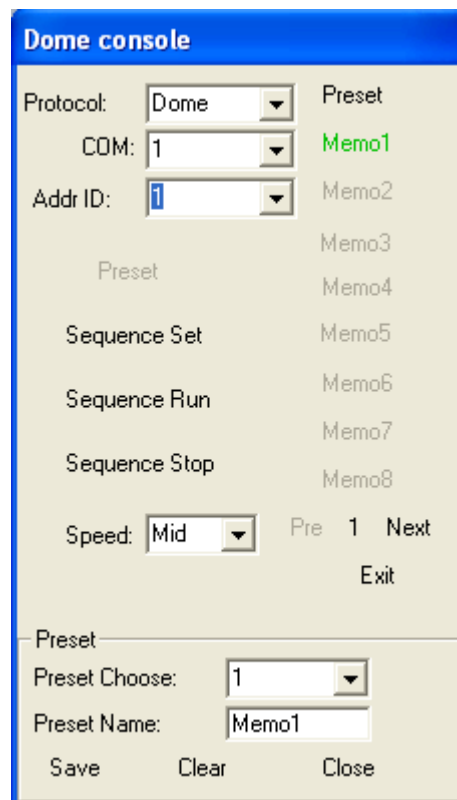
Click  button , to lock screen, the other button in screen can't be

selected;

To unlock , click this button once more and input correct unlocked password ,  
The default unlocked password : 1234 , you can change this unlocked password  
at system setup;

### ◆ Speed Dome Control Panel :

Click  button to open Speed Dome control panel



**Dome console**

Protocol:  Preset

COM:  Memo1

Addr ID:  Memo2

Preset Memo3

Sequence Set Memo4

Sequence Run Memo5

Sequence Stop Memo6

Speed:  Pre 1 Next Memo7

Exit Memo8

---

Preset

Preset Choose:

Preset Name:

Save Clear Close

- At “ Protocol :” to choose the speed dome model from the dropdown menu.
- At “ COM :” to choose the communication port that your RS232 to RS485 adapter will be using. RS485 adapter connects to your speed dome.
- At “ Addr ID: ” to choose the speed dome ID from the dropdown menu or just click the split screens to get corresponding ID.
- “ Speed: ” choose Speed Dome run speed, High, Middle, Low;

.Click “Preset ” to set preset

“Preset Choose: ” choose preset number;

“Preset Name: ” define preset name;

Control PTZ to move the camera to the your desired place;

Click “Save ” to save the preset;

Click “Clear ” to clear the preset;

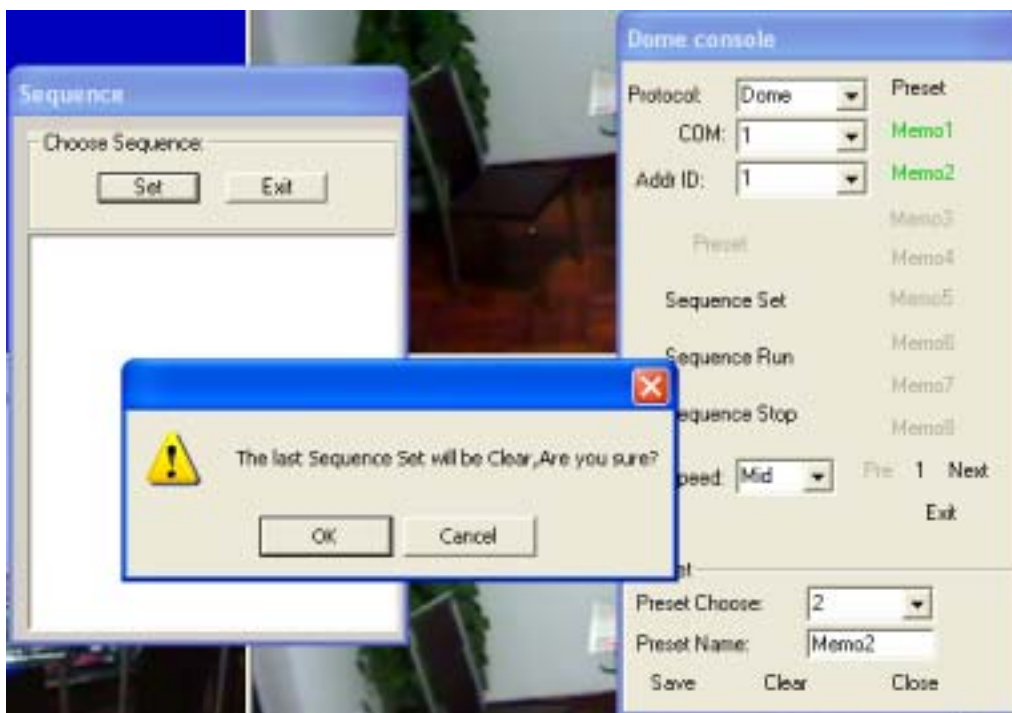
Click “Close ” to exit Preset;

The Preset is up to 64;

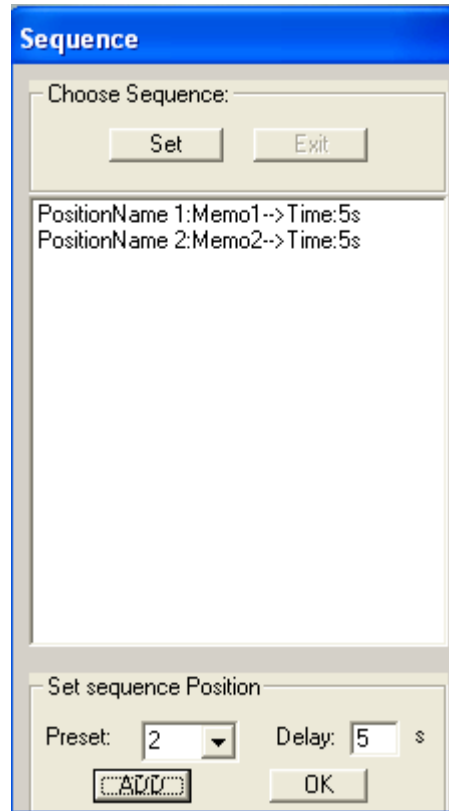
The Preset will show at panel at green color, click the preset name, the Speed Dome will move to the set place;

By “Pre ” and “Next ” to find all the preset;

.Click “Sequence Set ” to set sequence



If click “Set” button, will show message box  
“The last Sequence Set will be Clear,Are you sure?”  
click “ok” to clear all the last sequence set  
and set a new sequence set;

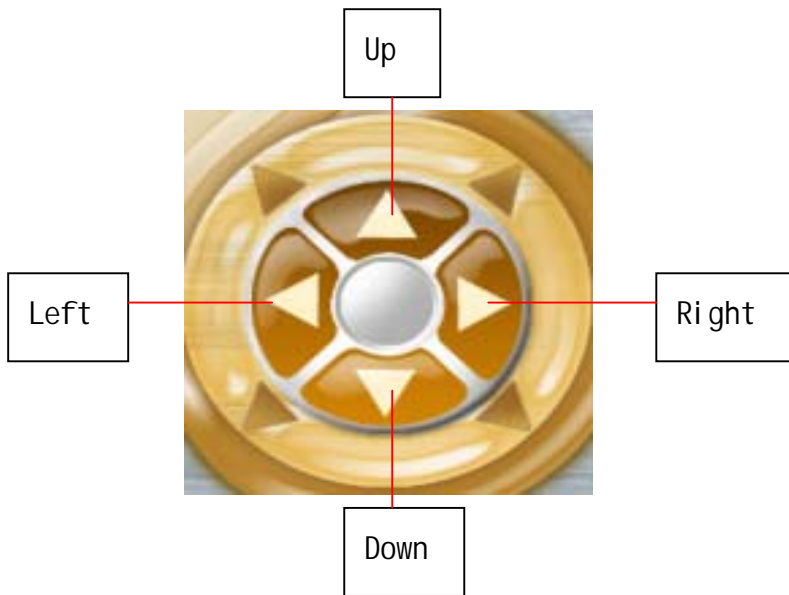


“Preset: ” choose the preset number ;  
“Delay: ” to set delay time, default is 5 seconds  
Click “Add” button to add the choosed preset to the sequence;

Click “Sequence Run” to run the sequence;

Click “Sequence Stop” to stop the sequence;

◆ PTZ Control Ppanel :



Click the button will allow you to control it's function

◆ Login & Hard Disk Info :



Display the User Name and Login status;

Shows the used space % on all the selected hard drives;

When put mouse at here will show:

Used space: XXXXX MB Remain space : XXXXXX MB

◆ Display E-Map Model :



Click MAP button to switch to show E-Map, the MAP icon color change to “white”, click MAP button once more to convert to video split screen model, the MAP icon color restored.

If Motion Detect or I/O Alarm trigger, the corresponding camera caption color will become red & glint!

(glint time is same as alarm delay time set at system setup)

◆ Camera Status Show :



Green : the camera is at monitor status;

Red : the camera is at recording status;

Yellow : the camera is at motion detect status;


Purple : the camera is at I/O alarm status;

Red, Yellow glint : the camera is at motion detect status and recording;


Red, Purple glint : the camera is at I/O alarm status and recording;


#### ◆ Control Panel :




Click  button to Log in or Log off;

When login success , this icon turns “ white ” ,if click this button once more will log off;

Click  button to snapshot the selected camera, the image save at the SVDVR install directory [Pics] folder

Click  button to show the latest snapshot image and to print.

Click  button to playback recorded video files.

Click  “ Rec ” to force recording the selected camera;

Click “ Stop ” to stop the forced recording of the selected camera;

( If Motion Detect recording or Alarm recording , the “ Stop ” invalid ) ;

These function just valid to Login User who has “ Force record/stop ” right.



If there is remote Client connect to this Server , this icon turns “ white”, click this button will show remote Client ’ s PC IP.

## System Setup



Click button to enter system setup

**Setup**

General | Camera | Local-User | Client-User | PTZ Decoder | Alarm Setting

Send Alarm to IP Address: 192.168.1.10

Disk Manager: Edit

Record Schedule: File Length: 10 Minutes, Alarm All Day (checked), Edit

Auto Flip: Auto Flip Interval: 0 Sec., Auto Log off (unchecked)

Caption Color: Show Camera Caption (checked), Back Color: [magenta], Text Color: [dark blue], Focus Color: [yellow]

E-Map: Pop-Up Map on Alarm (checked), Edit

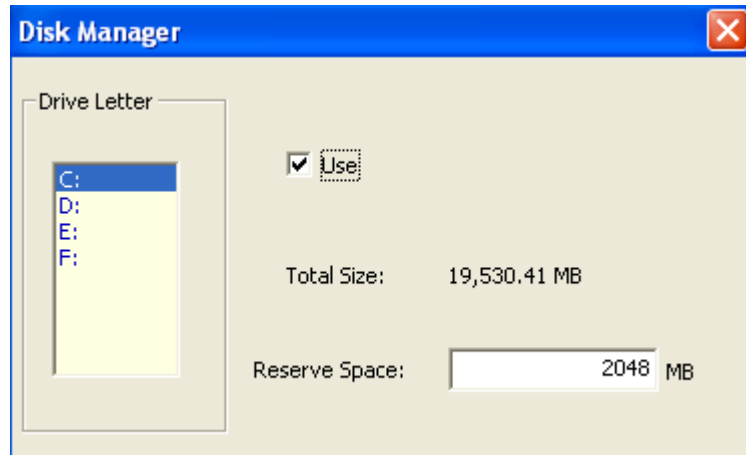
Set Card: Card NO: 1, Set Num: 4, VideoModel: PAL, Video Size: 320 \* 240

OK

- General :

## ✧ Disk Manager

Click “Edit” button , shows dialogue box like this:



Select hard disk drivers to record which Putting a check in Used box;  
Reserve Space: when remaining hard disk free space equal this setting,  
the recording will be overwrite, the default setting is : 2048MB.

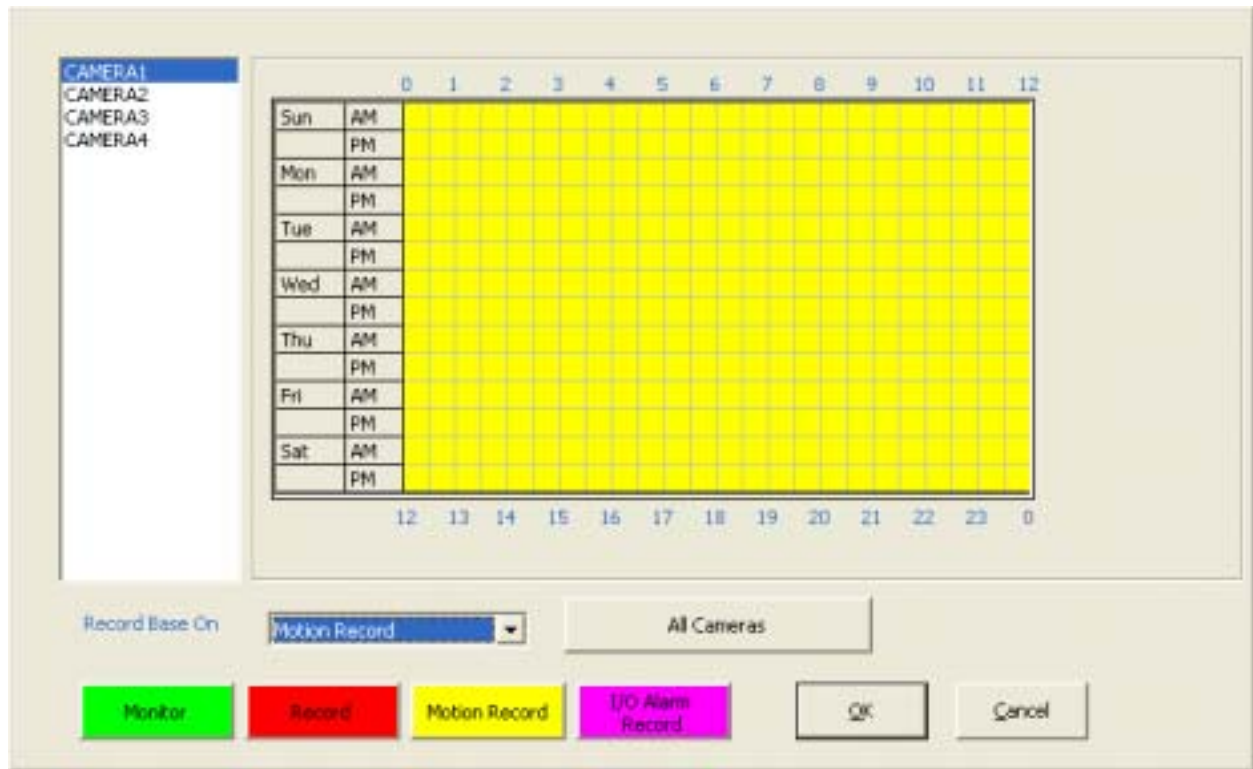
## ✧ Record Schedule:

File Length : the one recording file 's Max time , default time : 10minutes ;

Alarm all day : when select this item, no matter what the status of record  
base on is, if I/O Alarm trigger, will record;

When deselect this item, if I/O Alarm trigger, only when  
the status of record base on is I/O Alarm, will record;

Click “Edit” button to setup record schedule



You can set up schedule and status of individual camera or all from Sunday to Saturday , 00:00 to 24:00 every half of hour;

**. Record Base On :**

Choose status of camera from this dropdown menu

- “ Monitor ” : 24 hours a day and every week as monitor status;
- “ Record ”: 24 hours a day and every week as record status;
- “ Motion Record ”: 24 hours a day and every week as record only if motion is detected status;
- “ I/O Alarm Record ”: 24 hours a day and every week as I/O Alarm trigger the camera to record;
- “ Bank Record ” : from 8:00 AM to 6:00 PM every week as “ Record ” status,theother time as “ Monitor ” status;

**. The Means of Color :**

Green : at the time as “ Monitor ” status;

Red : at the time as “ Record ” status;

Yellow : at the time as “ Montion Record ” status;

Purple : at the time as “ I/O Alarm Record ” status;

After set up one camera schedule & status, if the other cameras have same schedule & status, will get just clicking “ All Cameras ” button ;

Click “ ok ” to save the setup, or click “ Cancel ” button to cancel.

#### ✧ **Auto Flip:**

Auto Flip Interval : if select 0 second, not auto flip;

Auto Log off : if putinng check in this box, the current user will be auto log off 5 minutes later , all the cameras display on screen will be hid, but the schedule & status not changed;

#### **.Caption Color:**

Show Camera Caption : if putinng check in this box , will show the camera caption on split screen;

Back Color : the background color of Caption;

Text Color : the text color of Caption;

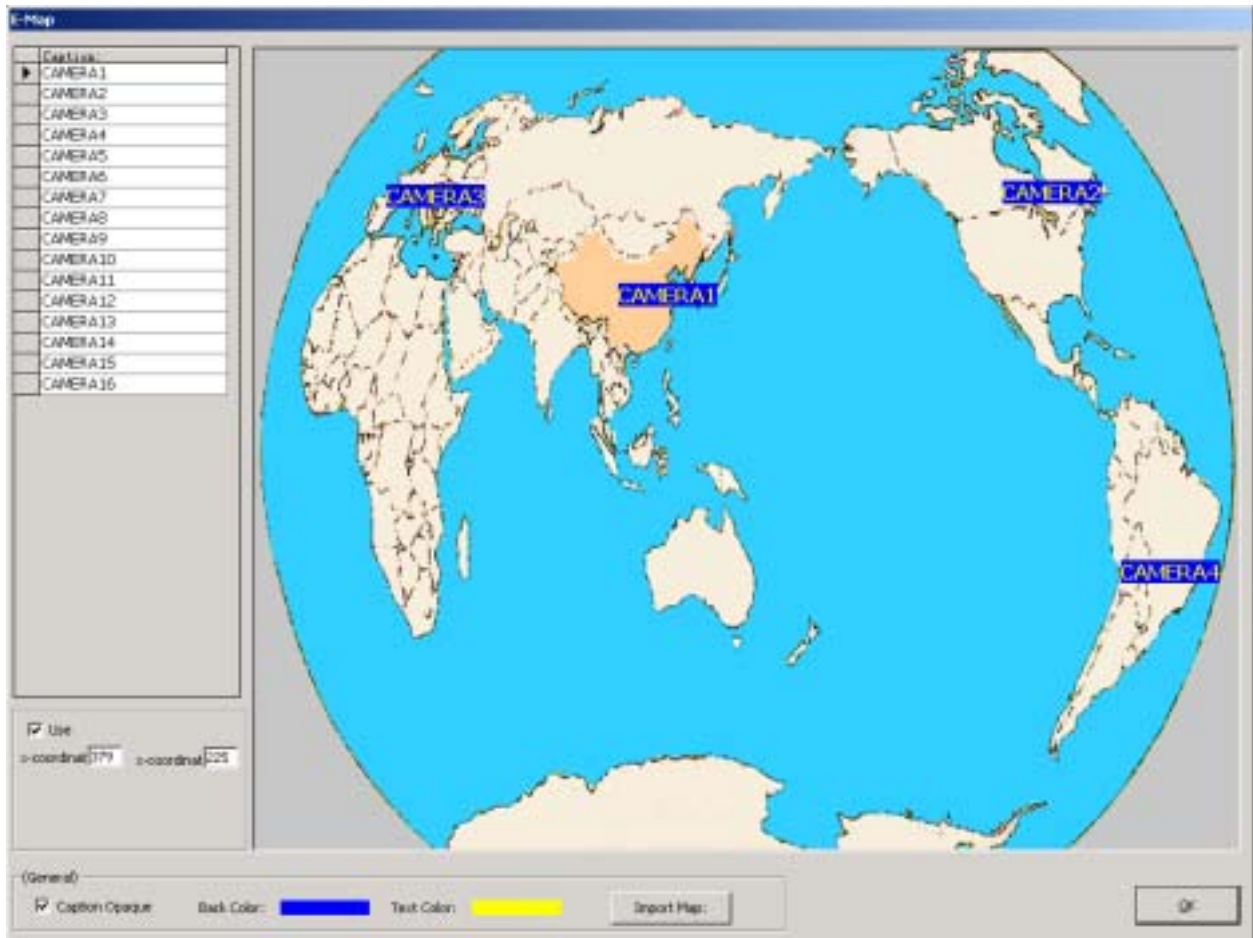
Focus Color : when the camera be selected, the background color of Caption;

Click the color bar to change the corresponding color.

#### **.E-Map:**

Pop\_up map on alarm : if putting check in this box , the E-Map will show when I/O alarm trigger ;

Click “ Edit ” button to edit the e-map



Select a camera at Caption , if let the camera show on map, just put check in the “ Use ” box;

Press the left button of mouse to drag the camera Caption on map to your desired place;

Caption Opaque : putting check in this box, will show the caption background color;

Back Color : the background color of Caption;

Text Color : the text color of Caption;

Click “ Import Map ” button to replace map image,

The map image must be : bmp、 jpeg , image size : 800X600 Pixes

## .Set Card:

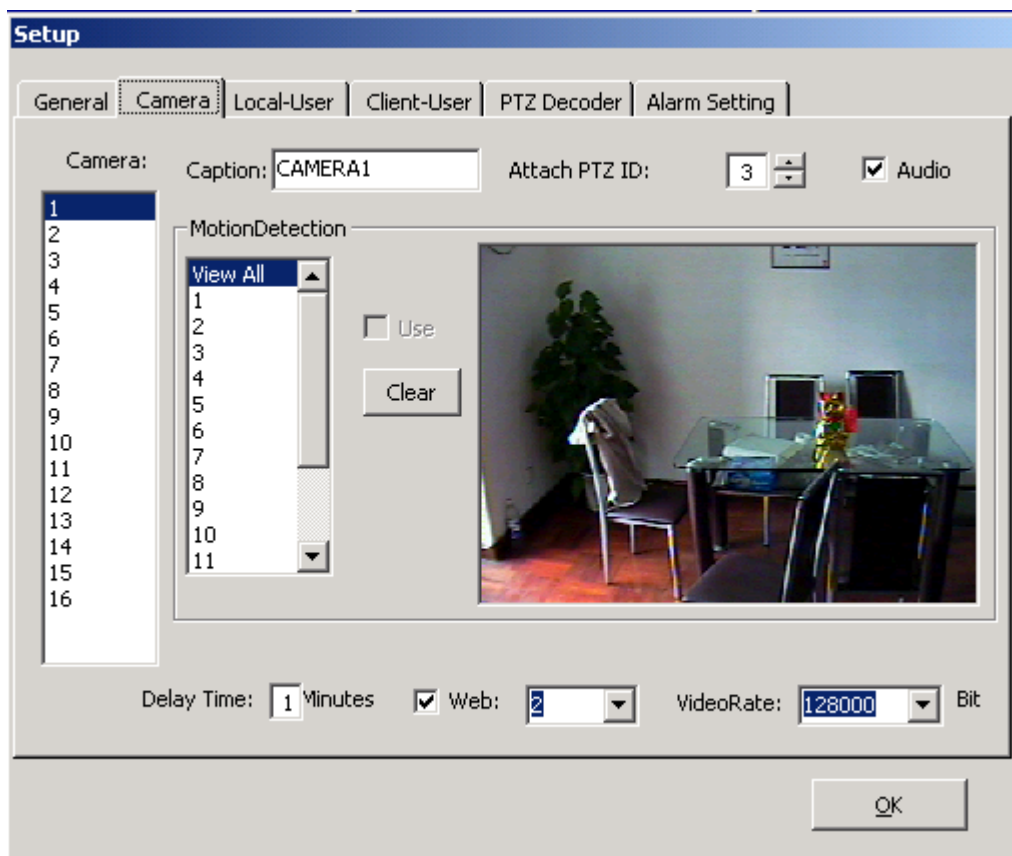
Card No. : choose the card number from dropdown menu;

Set Num : one XV-100 card , support 1 to 4 cameras, you can set how many cameras connecting to one card at here;

Video Model : you can choose the camera ' s format : PAL or NTSC

Video Size : Default is 320 X 240

## ● Camera



**Camera:** select the camera number to set up;

**Caption :** define the camera ' s title;

**Attch PTZ ID :** choose corresponding PTZ decoder ID;

**Audio :** putting check in this box , will record 2 channel audio which input from audio card (left & right channel) corresponding to camera

number 1 and number 2 ;

### Motion Detection :

Select a camera number and click "View All" to show all drawing Zone;  
Select Zone number from 1 to 16, you can draw up to 16 individual zones.  
Draw zones by clicking on the picture and dragging with the left mouse button. Putting check in "Use" box to enable the zone.

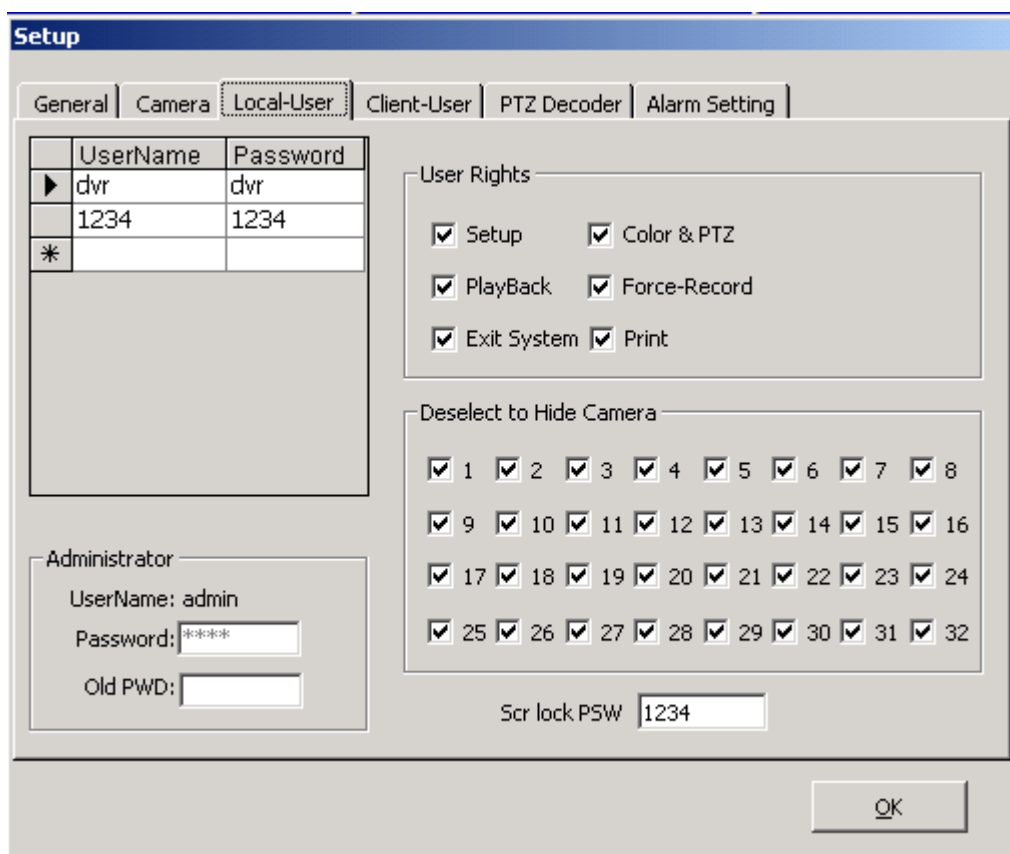
As you enable zones, be sure to set the sensitivity for each zone to meet your specific needs.

Click "Clear" button to clear the drawing Zone.

sensitivity : the sensitivity rate from 1 to 100, 1 is most sensitive;

**Delay Time** : delay recording time after Motion Detection or I/O Alarm trigger stop, the default time is 1 minute;

- Local User



**Administrator :**

User Name : admin

Default Password : 1234 ;

If input correct Password at “ Old PWD: ” , you can change a new password at “ Password: ” ;

At User Name , you can add, delete and modify user;

**User Rights:**

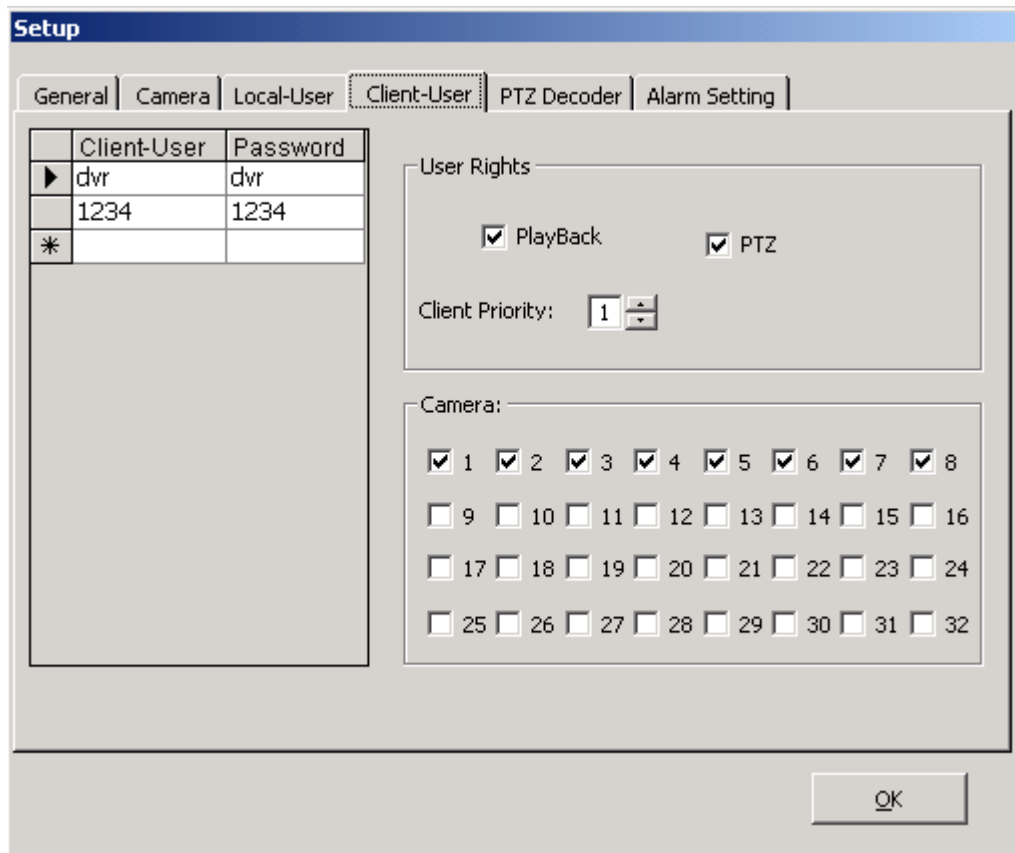
Select a user , you can modify the user rights by putting check in/off corresponding box;

**Deselect to Hide Camera:**

If deselect the User ' s camera number, the corresponding video will not show on split screen, but the camera schedule & status not changed;  
When this User login , he/she can't view the hide camera ' s recording playback;

**Screen Lock PSW :** set screen unlock password , default password is: 1234;

- Client User:



At left side "Client-User, Password", You can add, delet and modify Client-User & Password;

**User Ri ghts:**

If select Playback, the Client-User can view Server 's camera recording files remotely;

If select PTZ, the Client-User can control Server 's camera PTZ remotely;

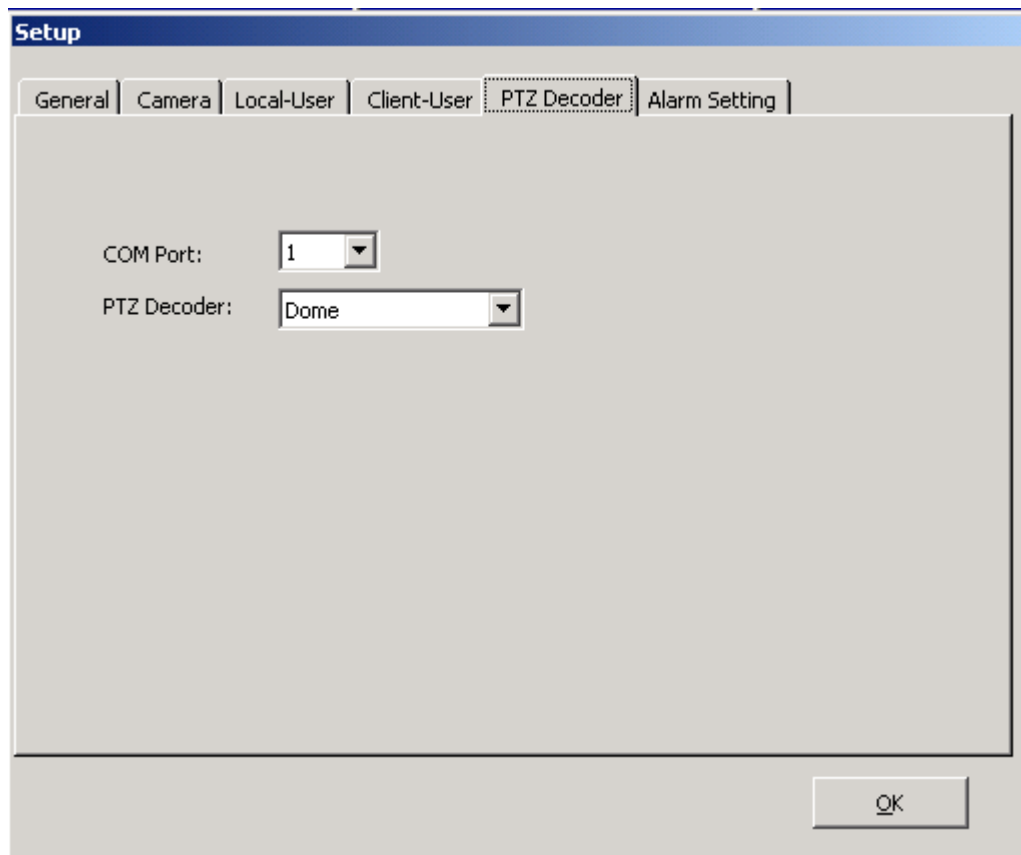
**Camera:**

If select the camera number, the Client-User can view this camera remotely;

**Client priority:**

From 1 – 7, 1 is super, 7 is lowest;

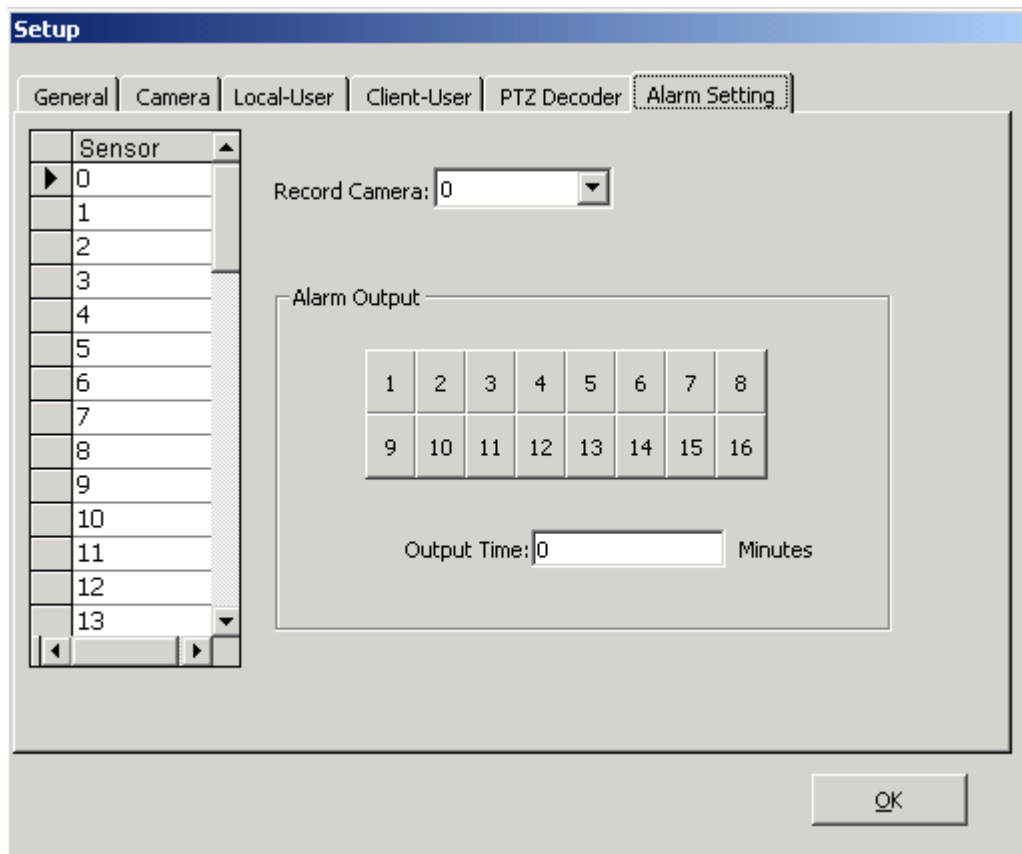
- PTZ Decoder:



**COM Port:** Choose the communication port that your RS232 to RS485 adapter will be using, RS485 adapter connects to your PTZ decoder.

**PTZ Decoder:** Choose the model or brand of your decoder from the dropdown menu. If your model is not listed, please send the decoder protocol to us, we'll add it for you.

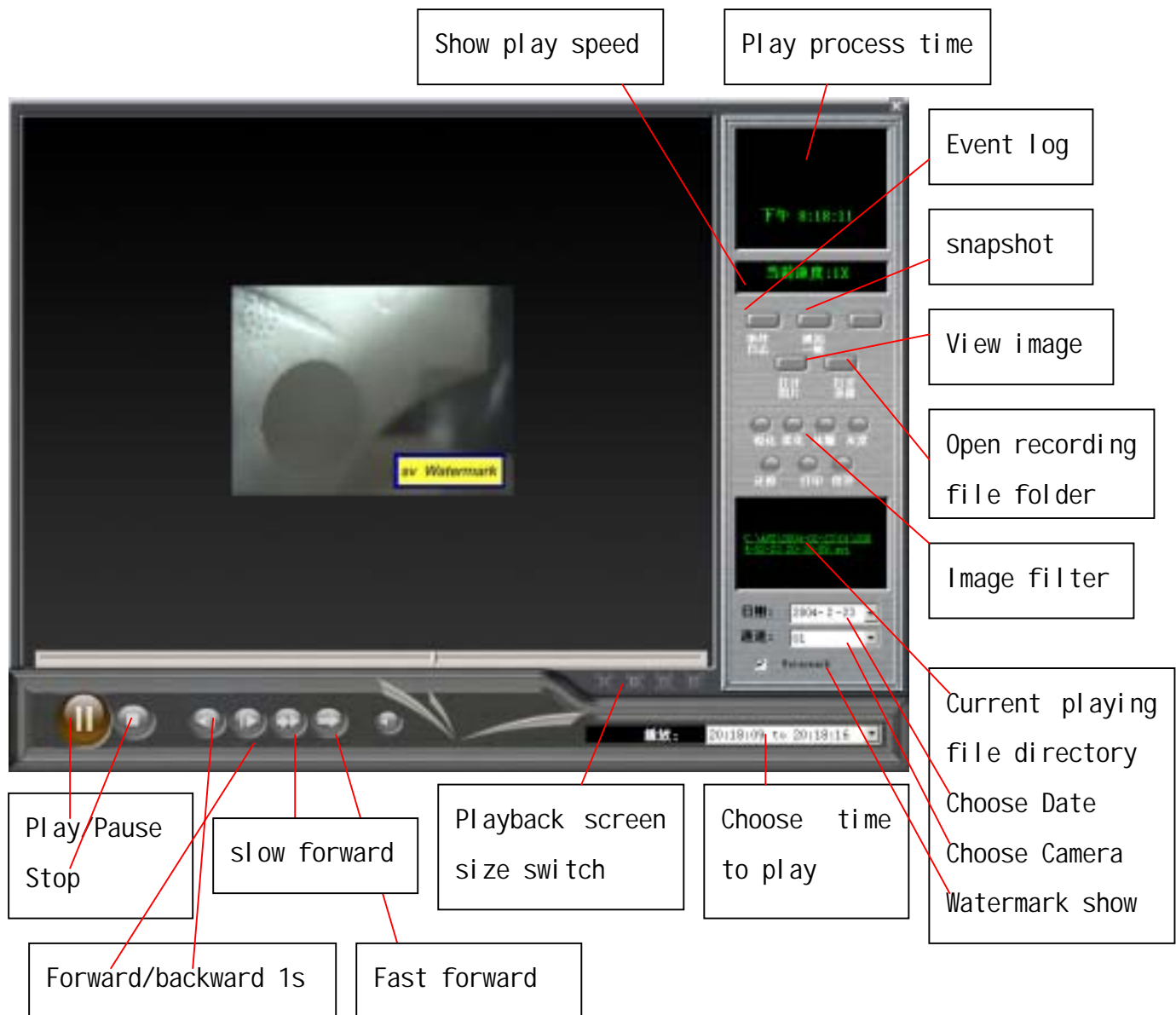
- Alarm Setting:



Select the camera and the corresponding input that will trigger the camera to record.

# Playback

Click  button to playback

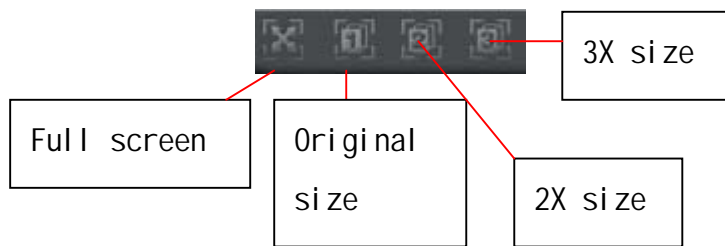


**Date:** choose date from dropdown menu;

**Channel:** choose camera number;

**Play:** choose time to play;

## Playback Screen Size Panel :



Click button to fast forward play , click the button one time to speed up one level , there are 3 level 2X, 4X, 8X;



Click button to slow forward play , click the button one time to speed up one level , there are 3 level 1/2X, 1/4X, 1/8X;



Click button to forward 1 second;



Click button to backward 1 second;

Click “ Snap ” button to snapshot the playback, the image save at the SVDVR install directory [Pics] folder;

Click “ View BMP ” button to view the snapshot images;

Click “ Play video ” button to play other AVI files;

Click the “ Current playing file directory ” to backup recording files;

## Image Filter:

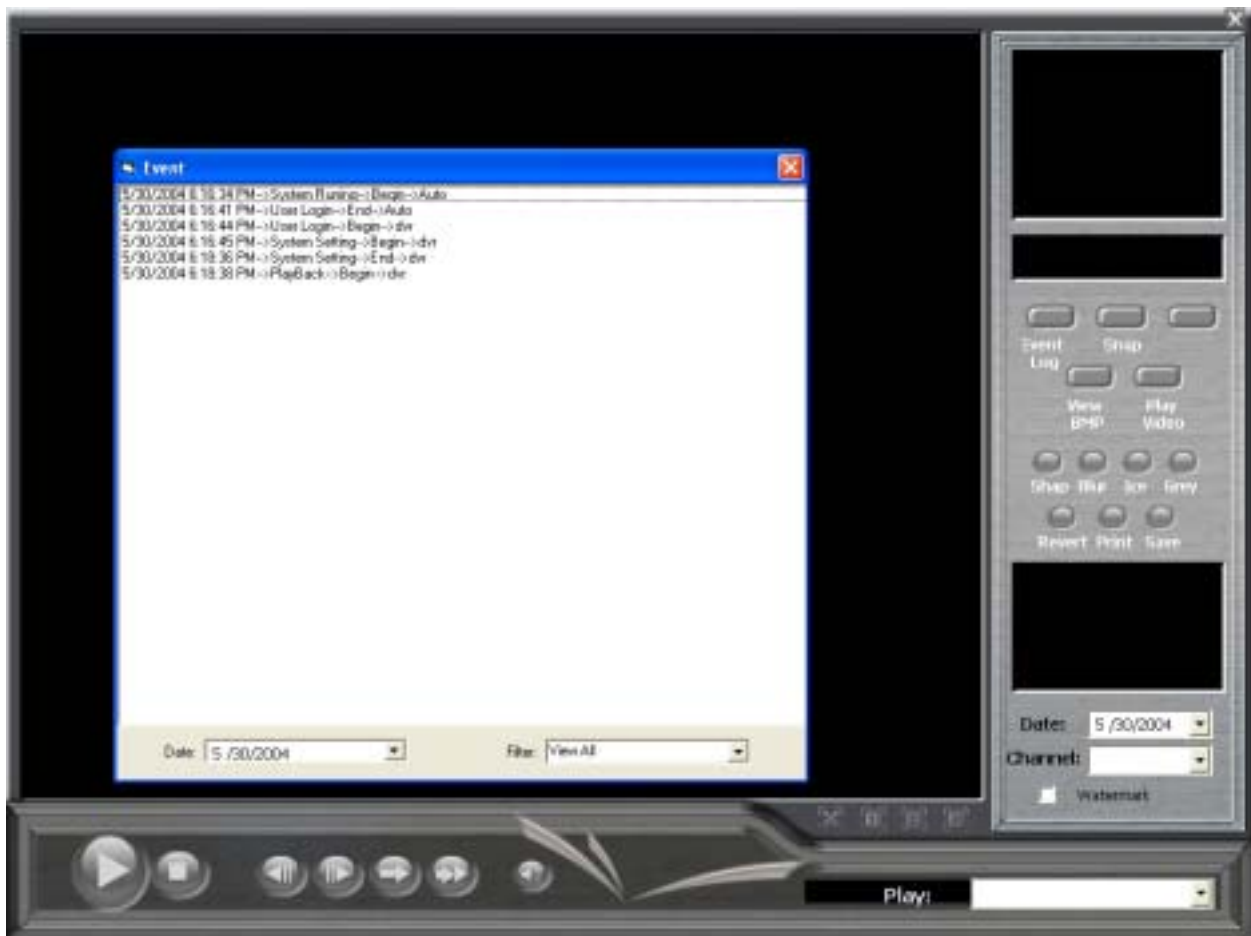
When view a image, you can process image by “sharp”, “Blur”, “Ice”, “Grey”;

Click “Revert” to undo;

Click “Print” to print;

Click “Save” to save the image;

## Event Log :



Event Log record all the system run status, you can view the log by Date, Filter;

Select “ watermark ” ,the watermark will show on screen



## Chapter 6      **Client Software**

Client Software allows you to view remote camera,control remote PTZ,even playback remote camera recording.

### **Client Software Installation:**

Insert the software CD in the CD-ROM drive.

Double-click on the folder of [Client].

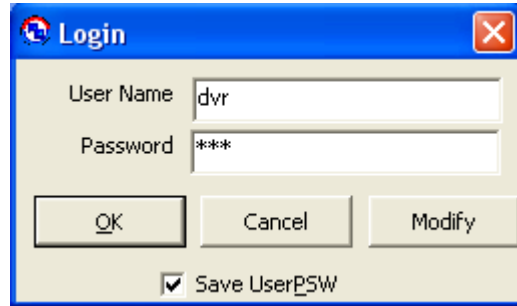
Double-click on the c\_install icon to begin installation.

After rebooting your computer, you will find a shortcut for the Clenr program in your "START" menu, listed under "All Programs". You may now run the program as desired.

## Client Software Guide:

There are two model client GUI, one is “Panel Client GUI”, the other is “Full Screen Client GUI”;

Run Client program, will show this box first.



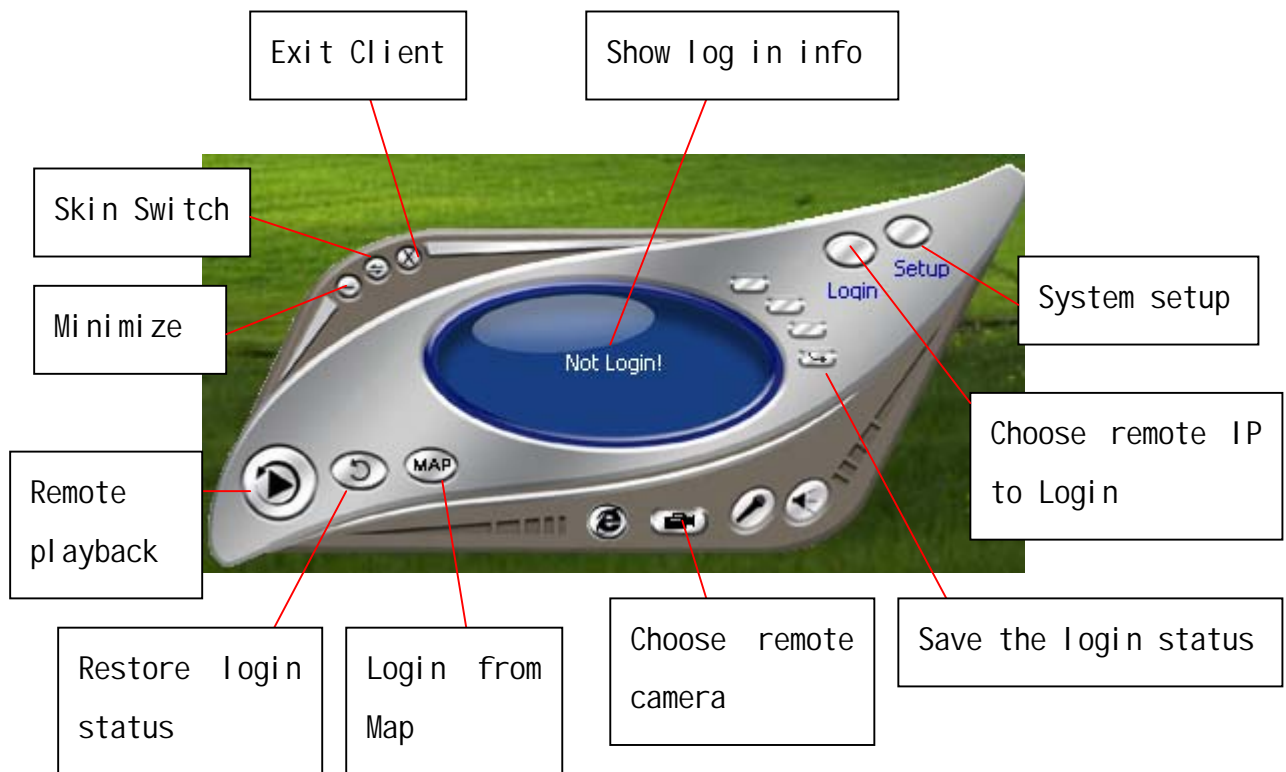
User Name: default is: dvr

Password: default is: dvr

This User Name & Password prevent the client program not be run by others; Click “Modify” button, You can modify the User Name & Password personally,



## Panel Client GUI :



## Setup :

Click "Setup" button to set up system;

### New Host:

Input Server's PC IP, click "Add IP" to add new remote Server;

### Host Info:

Choose remote Server IP from dropdown menu to edit;

Host Name:

To define remote server name which will show on video box title;

User Name & Password:

The input User Name & Password must be defined in Client-User of remote Server's Setup;

Default is:

User Name: dvr ; Password: dvr

Select net model: LAN or Internet

If select LAN , support UDP multicast function;

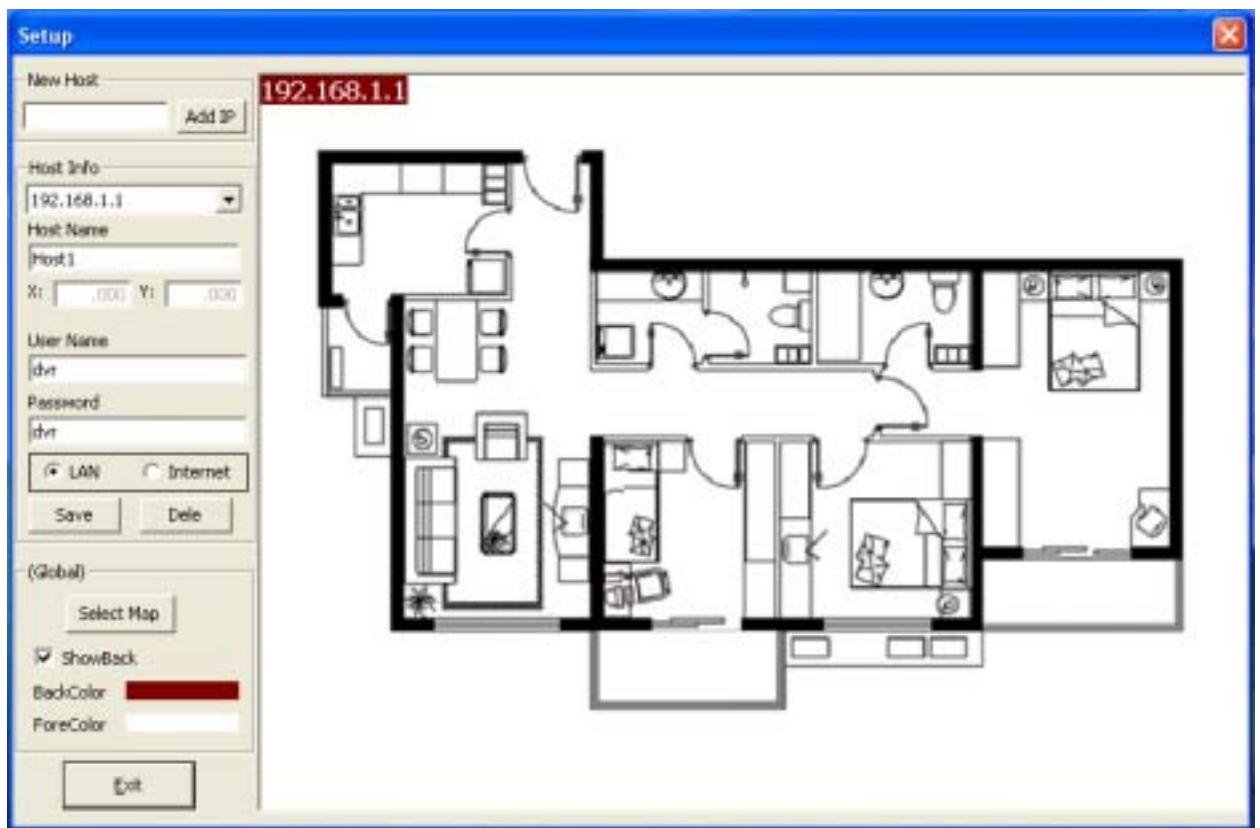
Click “ Save ” to save the setup;

Click “ Dele ” to delete the selected server setup information;

Client software support E-Map Login;

Click “ Select Map ” to import map image;

Dragging Server IP to the corresponding place;




Click “ Exit ” button to exit;

Click “ Login ” button to choose the Server IP which you want to log in;

If login ok, the “ Show Login info ” panel will show “ Login Success! ” ;


If login failure, the “ Show Login info ” panel will show “ Login Fail! ” ;

Click  button to choose the camera which you want to view;




Click  button to record at client site;


Click  button to stop recording at client site;

Click  button to control remote PTZ;




You can change the video screen size just by dragging rightdown corner(Left button of mouse down);

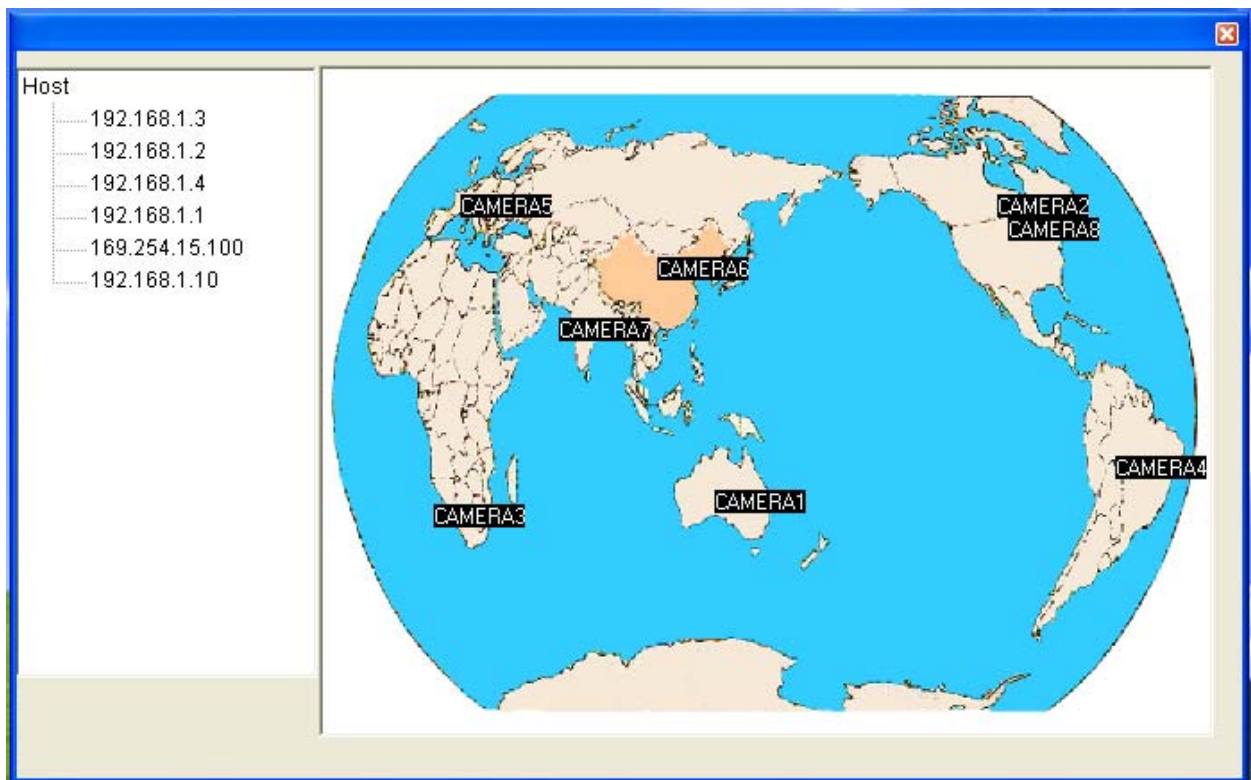
Click  button to save the current login status;

If not login , click  button to restore the last login status and

automatically login;

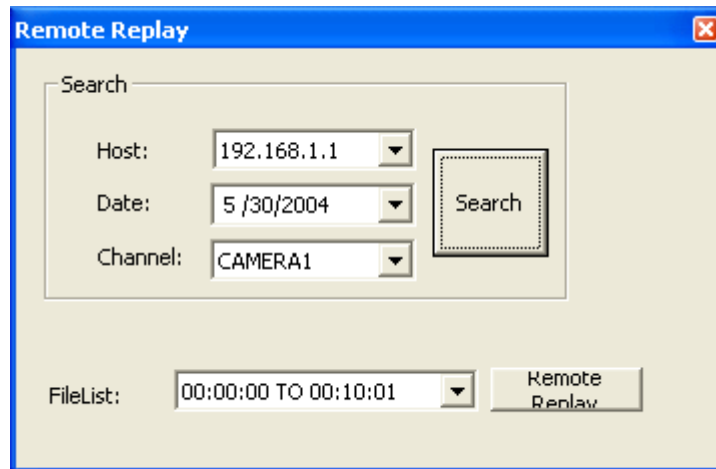
Click  button to login from E-Map;

Click the Server IP on map, will auto login, then click the camera number will show the corresponding video;





Click button to playback the recording of remote Server;



Host: choose the remote Server IP;


Date: select the date;

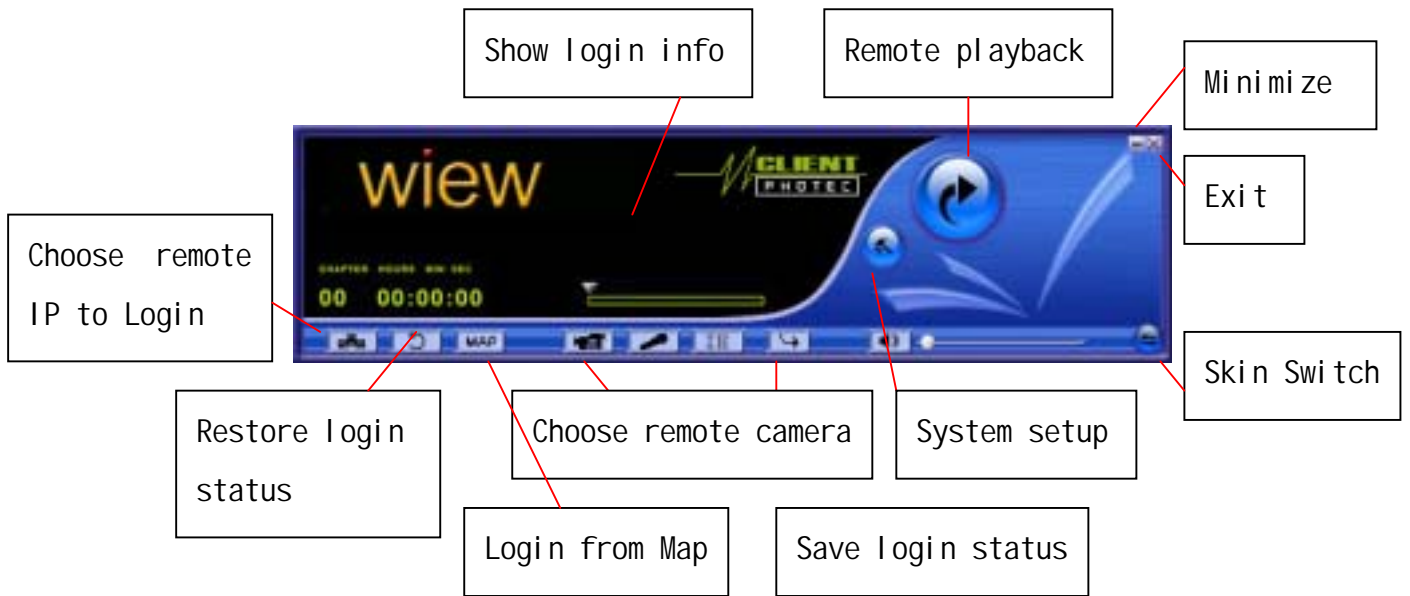
Channel: choose the camera number;

Click "Search" button to find, if getting, the files name will show at "FileList";

Choose the file , then click "Replay" button to play;

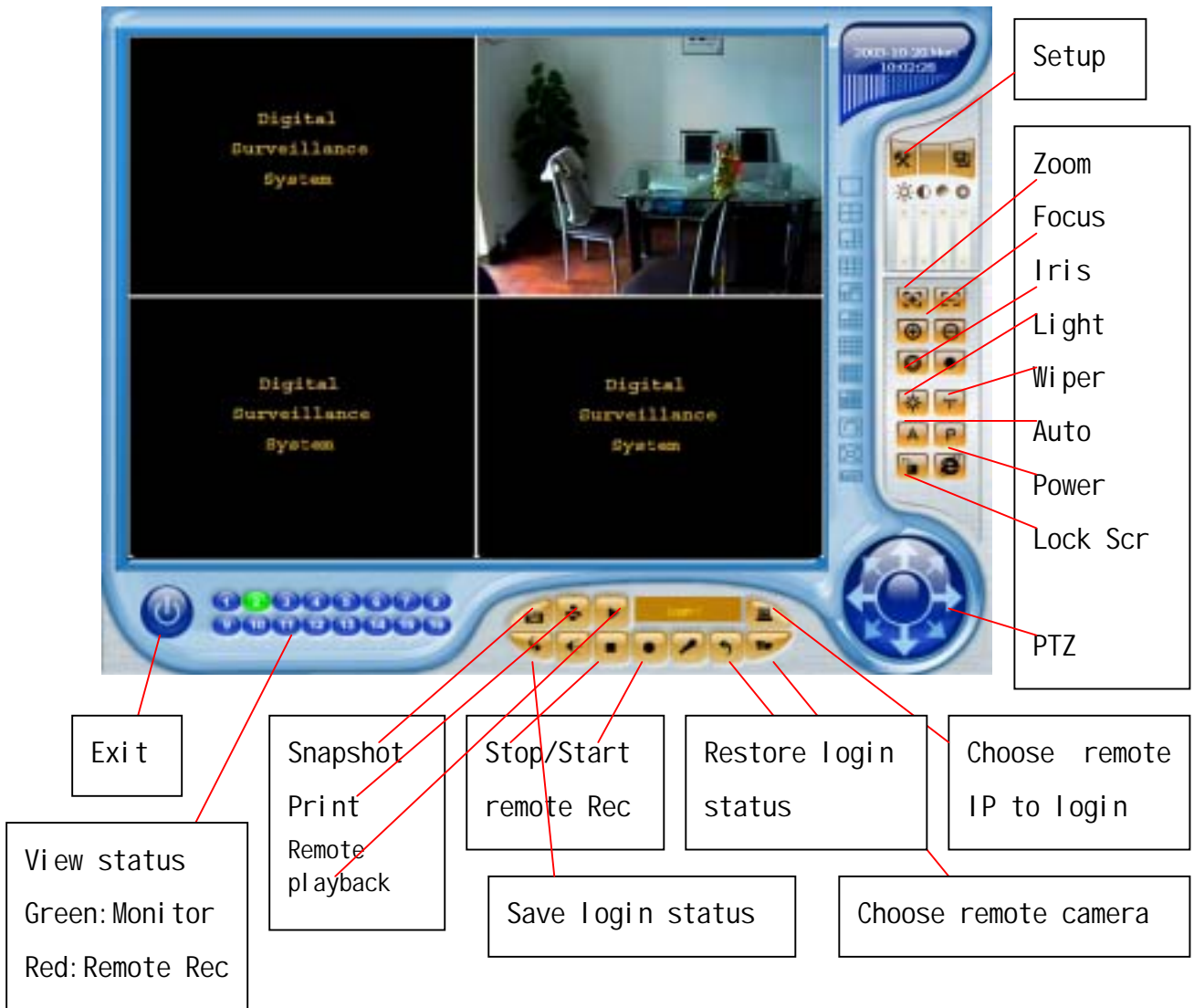
Panel Client GUI has another Skin

Click  button to change Skin



## Full Screen Client GUI :

The function of Full Screen Client program is same as that of Panel Client;



Putting mouse at the video for seconds will show the video information (Server IP & Camera number).